

BONUS

100+ design
FINDS

PLUS HGTV'S
AMBROSE
PRICE

CANADIAN HOME trends

CANADA'S HOME DÉCOR & LIFESTYLE MAGAZINE



Yanic Simard
of CityLine



Coming up on the...

Marc Atiyolil
show



Easy DIY
RECIPES

CANADA \$4.95
DISPLAY UNTIL June 9, 2011



our best SPRING FEVER design picks

6 Tips for
Refurbishing
Old Furniture

5 ways to
De-Clutter
Your Home

create a

Backyard Oasis

with Glen Peloso

Change *the look*



Available at www.ceratec.com

Love
at first sight

The bold colour textured wall tile is exquisite. It brings life and colour to the space.



*Got to
have it*

Replace a chrome light fixture with a black more ornate fixture to create a more eclectic designer look.



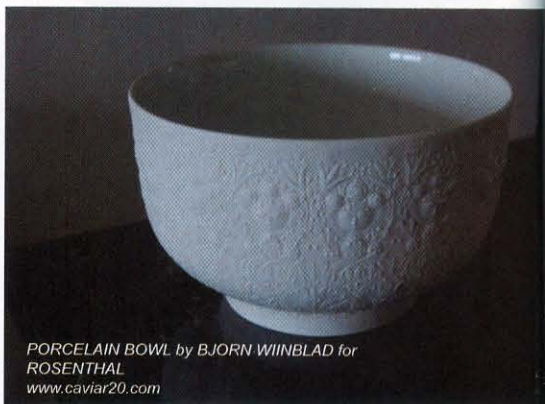
Available at www.livinglighting.com

Add curved design elements to bring feminine lines to the space. The curves will soften the look and add a personal touch.



Victoria + Albert's Amalfi Tub. Amalfi measures just under 65" long and holds an impressive 63 gallons of water. It retails for \$4,800.

Replace the square sleek rectangle sinks with a unique "bowl sink". The embossed pattern sides create an antique looking piece.



PORCELAIN BOWL by BJORN WIINBLAD for ROSENTHAL
www.caviar20.com

Hanging artwork in a bathroom is a chic way to bring in new colour and character into the space.



5 Things to Consider Before Buying a Tub

Shopping for a new bathtub can be a bit overwhelming with all the options available. Traditional or contemporary? Built-in or freestanding? Air jets? Aromatherapy? Before you make a purchasing decision, do a little research to ensure that the bathtub you choose is the perfect match for your lifestyle and expectations.

Materials Matter

It matters what your tub is made of. Cast iron is a traditional tub material with a proven record of durability but a cast iron tub can be very heavy and may require floor reinforcements. Acrylic tubs are cast in a mold and offer many shapes and color opportunities. Metals such as copper and stainless steel are eco-friendly choices because of their recycled content. Composite or solid surface tubs are cast in a single piece and engineered to look like molded stone. They have a modern style and weigh less than cast iron. Victoria + Albert crafts its line of luxury tubs from a renewable material that embodies the characteristics of many different materials. Their unique ENGLISHCAST® material is made from finely ground volcanic limestone mixed with resin. A stone-rich alternative to cast iron and acrylic, their tub has high insulation properties with a naturally glossy white finish that is easy to maintain. And Victoria + Albert offers their freestanding tubs in a wide array of styles ranging from contemporary to traditional.

Know Your Style

Until recently, most bathrooms had a built-in garden tub, often with a tiled surround to conceal plumbing hardware. This tired trend is giving way to a renewed interest of the freestanding tub being the focal point. Although its roots may trace back to claw foot designs of the Victorian era, today's freestanding baths have been reinvented with modern flair, including chunky wooden feet or designs that rest squarely on the floor with no feet at all. Options include a traditional slipper style tub, a double-ended tub designed for two, and geometric-inspired soaker tubs. While the majority of tubs still come in white, manufacturers are now offering the option of painting or stenciling the outer shell of the tub to create a custom look.

Fully Loaded

Look for bathtubs that promote the healing benefits of hydrotherapy, such as jetted tubs and air baths with streams of invigorating bubbles. Stimulate your senses with options for aromatherapy and chromotherapy. Don't forget safety features such as hand showers, grab bars and automatic temperature controls.

Space Constraints

Know how much space you have to work with. Compact tubs are becoming more popular for those with tight quarters who want the luxury of a tub and a separate shower. If you have room to spare and want to create a dramatic focal point, consider installing two tubs in a side-by-side configuration. This emerging trend creates an intimate retreat for two and lets each bather indulge in their own personalized experience.

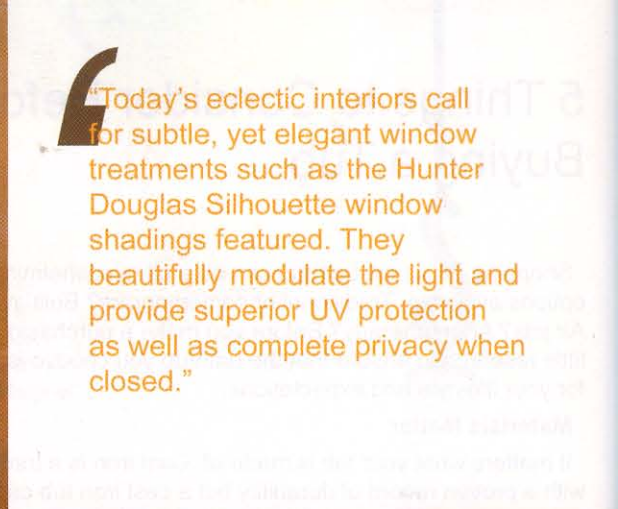
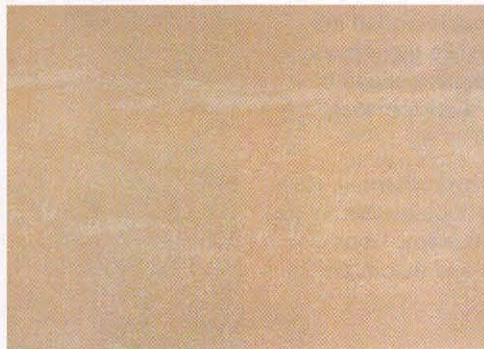
The Fine Print

Know what you are getting into. Most tubs are easy to clean. Solid surface tubs are non-porous and resistant to stains, mold and mildew. Cast iron is impervious to dings and dents. Copper tubs need regular maintenance to keep their bright, shiny appearance, although many appreciate the lovely, natural patina that copper develops over time if left untreated. Compare warranties when comparing tubs and look for long-term commitments. An investment in a quality bathtub will last you for years to come.

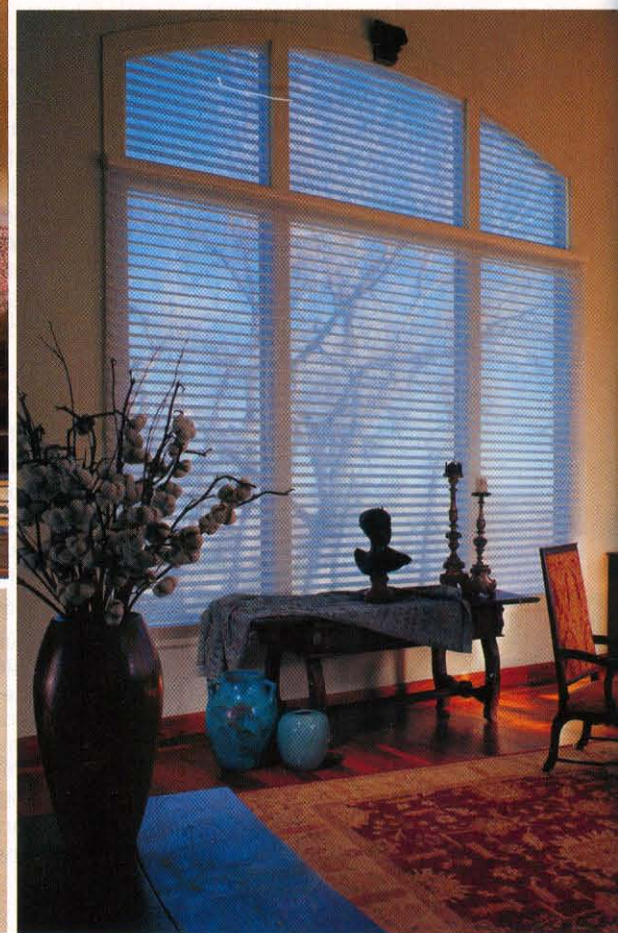




Vicente Wolf on Eclectic Décor



Today's eclectic interiors call for subtle, yet elegant window treatments such as the Hunter Douglas Silhouette window shadings featured. They beautifully modulate the light and provide superior UV protection as well as complete privacy when closed."



Today people aren't afraid to mix and match. They're decorating with a mix of styles, materials and periods. The result: delightful, eclectic interiors that reflect a very specific sense of place. According to Vicente Wolf, acclaimed designer and author of *Lifting the Curtain on Design* among other works, "The eclectic style speaks to people wanting to be more individual by not following any one design trend 100 percent."

"Modern eclecticism is an environment that has both reference to the past and to a global lifestyle and might combine objects from Africa with 1920's and 18th-century pieces," says Wolf. "They're points of view coming from all directions, but in the final analysis, speaking with one voice."

Window treatments best complement eclecticism in a subtle and simple way. "It's all about the capability of

allowing the outdoors in, of light and openness and a more functional way of dealing with it," advises Wolf, who looked to Hunter Douglas when decorating the windows of a recent show house.

Hunter Douglas Silhouette window shadings, with the Signature S-Vane, are ideal for today's eclectic interiors and have long been a favorite of hard-to-please interior designers. They provide a low-key, yet elegant background and beautifully modulate incoming light. They also offer superior UV protection and complete privacy when closed.

Wolf sums up his approach to window treatments by saying, "I like to get down to basics." Silhouette window shadings are an ideal way to get down to basics and keep in tune with today's eclectic décor trend in your home. - (NC)