



the  
Furniture Guild

— *Vanity Flair Collection of Bath Furniture*

# CREATING BREATHTAKING ENVIRONMENTS FOR THE MOST DISCERNING CLIENTELE SINCE 1984.

From the beginning, the true focus of The Furniture Guild has been to learn about and understand the wants and needs of our customers and delight them by fulfilling their wants and needs beyond their expectations. And that is exactly what we do everyday. We work with our clients to provide a bathroom that fits their needs, their space and their design style.



*Tuscan vanity shown in Tombstone finish*

# ENDLESS POSSIBILITIES AND SOLUTIONS TO MAKE YOUR DREAM A REALITY.



## MATERIALS

*Quality begins here with carefully selected lumber. The trained eye of our skilled craftsman individually inspects each piece of lumber before it is used for one of our pieces.*



With over 40 designs and finishes to choose from, we can create spectacular bath environments, from classic to contemporary and everything in between. Using exotic woods, customized storage options and the ability to create custom pieces, we can exceed the expectations of even the most discerning clientele. From the powder room to the master bath, let The Furniture Guild help create a warm, inviting and luxurious retreat - just for you!



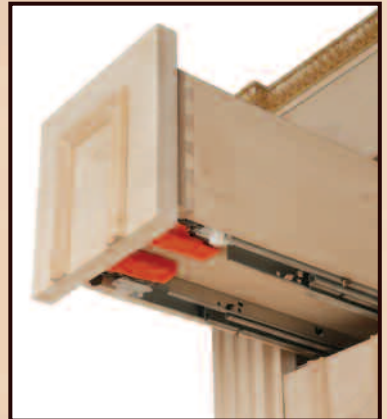
Since every piece is made to order, we at the Furniture Guild have the ability to customize your furniture. From altered sizes custom components, we can create just what you need.

# COMBINING OLD WORLD CRAFTSMANSHIP WITH THE LATEST TECHNOLOGY

Every piece of furniture is painstakingly created one at a time in our facility. This means that we have full control over the quality of everything we produce. From the select hardwoods to the hinges and drawer runners, we use only the best available components to give our furniture the heirloom quality to which our customers have grown accustomed.



Every drawer is hand built using the time proven dovetail construction process. We then mount the drawer using the finest soft closing drawer runners available. Fully adjustable European hinges with the soft close feature are also standard on all doors.



Only the finest 3/4" thick maple hardwoods are selected for our cabinetry face frames, five-piece doors, and mirrors. All of our sides are constructed with 3/4" furniture grade maple plywood utilizing solid back braces and multiple interior supports attached using dados to ensure stability.





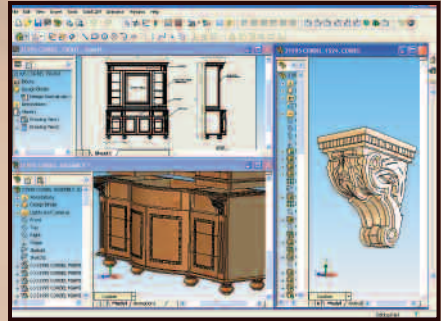
## ENGINEERING

*Quality is enhanced with the thoughtful inclusion of important features that result in significant benefits to our consumers, such as split pocket drawers to accommodate P-traps, mirrors designed to accommodate wall hung faucetry, and retro-fit hutch tops.*



*Looking for more storage? Customize one of our mirrors to use as a medicine cabinet surround in your bathroom. We can use any of our exquisite mirror styles and design it to encompass the luxury of recessed medicine cabinetry.*

Since every piece is made in our facility, we have the capability to create exactly what you need. We're famous for incorporating timeless designs and award winning



“solutions” while creating breathtaking bathroom environments to exact specification. We use state-of-the-art engineering software to design and engineer pieces that are tastefully designed and extremely practical. Every piece is designed and drawn; first by hand and then by our in-house engineering department using our CAD system.



# FINISHES

We've always prided ourselves in our finishes and unmatched finishing capability. From classic wood stains and glazes, to old world finishes, we give you capability to create any look that you desire. A full staff of Artists are able to create hand painted motifs and beautiful faux finishes that can include french plasters, toile fabrics, and gold leaf embellishments. In addition, every piece goes through an intense finishing process which includes the use of Vinyl Sealers and Water Resistant Acrylic Lacquers.



*Briar*



*Brandy*



*Briar - Ash Burl - Gold Accents*



*Parchment*



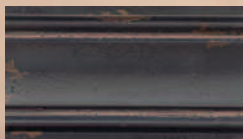
*Tombstone*



*Cinnamon*



*Artisan Tundra*



*Artisan Black - Gold Accents*



*Pavilion vanity shown in Black Forest finish.*



## HAND PAINTED OPTIONS

*Our artists can hand-paint your choice of decoration in colors that fit your decor. Each piece is hand painted just for you - no two are exactly alike. Select any style you want, from classic to contemporary, romantic to rustic, or traditional to trendy. You can request your own custom design from one of our classic in-house designs.*



*Berkshire vanity shown in Normandy finish with Walnut Burl inlays.*

# EXOTIC & DOMESTIC WOODS & VENEERS

Our exciting new line of domestic and exotic wood veneers add a dramatic accent to your bathroom motif. Textures, integral lines, exotic swirls and vibrant colors might be just what you are looking for to make your bathroom stand out from all the rest.

We use Maple, Mahogany, and Walnut woods as well as fine veneers such as Ash Burl, Walnut Burl, Sapele, Mahogany, Zebrawood, and figured maple.



*Brava Vanity in Zebrawood*



*Berkshire vanity shown in Briar with Ash Burl inlays*



*Custom Jervais shown in Walnut with Walnut Burl inlays*





## QUALITY

*A result of the caring and proud craftsmanship of skilled Furniture Guild employees. Each piece is inspected a final time before it is shipped to ensure that it meets the high quality standards of our customers.*



For more information on our full line of vanities please refer to our in store catalog or visit us on the web at [www.thefurnitureguild.com](http://www.thefurnitureguild.com).



*Custom Artistry bathroom shown in Walnut with Figured Maple inlays*



# the Furniture Guild

P.O. Box 1647  
141 Railroad Street  
Canton, Georgia 30114



[www.thefurnitureguild.com](http://www.thefurnitureguild.com)